



Professionals in Concrete Sawing, Drilling & Grinding



About Undercut

Established in 1995 by Karel Kivits, Undercut was formed to assist Construction with a project for the Royal Australian Navy at their Garden Island Torpedo Support Facility in WA.

Since then, they have gone on to become a leader in the Concrete Cutting industry with the support of a variety of companies such as Delta Corporation, a company who design and construct bridge sections, T Beams, hollow core pre-stressed, precast floor panels & precast building panels.

Another company we carried out work for was Leighton & United Constructions with the Perth Metro Rail Tunnel from Rowe Street to William Street in the Perth CBD.

In 2010, Undercut assisted Bill Fingerberger with the Neerabup gas fired power station and Cimeco Pty Ltd with remedial work related to the power station and Cape Preston Compressor Station.

Recently we worked with Monadelphous Engineering with deep core drilling and inverted wall sawing to the train load out chute upgrade at BHP BIO Yandi Site, North West WA.

We have also assisted BHP with the upgrade to apron feeders at their Perseverance Nickel mine in Leinster, Eastern Gold Fields WA.

In addition to these large projects, we also have a large client base which consists of smaller builders & service suppliers throughout the metro area.

We are proud to say we have some 40 years experience in the industry within Australia, New Zealand, Singapore & Holland, with our most senior member cutting since 1969.

At Undercut we enjoy a challenge. Nothing is too difficult and every job is treated with the top priority.



Health and Safety

At Undercut, we are committed to providing a safe work environment for our employees and contractors. That's why we have developed an Occupational Health and Safety policy and code of practice, complying with all legislative requirements.

Any time our employees are on your site, whether it be at a residential home, or a mine in the Kimberly; they have all the equipment and knowledge they need to maintain a safe working environment.

For more information, or to look at our policy, please contact the office.

“**Safety** is success by purpose.
Not Accident.” *Unknown*

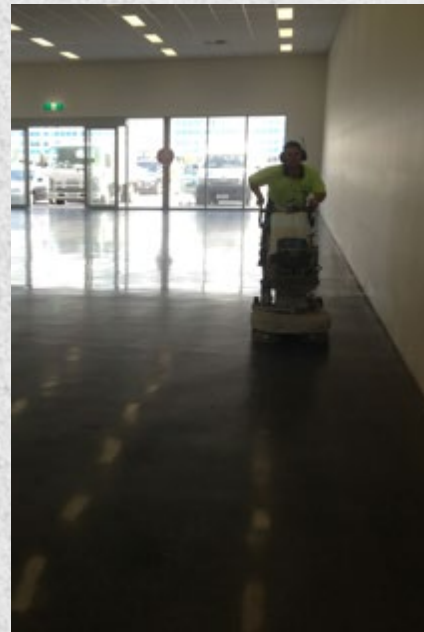


Nexgen Construction Supplies

Waiting for replacement tools or parts can be very costly. At Undercut, we have 24/7 access to Nexgen Construction Supplies, our in house diamond tool supplier. This means replacements get on site FAST, with less downtime.

Concrete Grinding, Honing & Polishing

- Honing existing exposed aggregate.
- Polished concrete bench tops.
- Wet/dustless grinding.
- Slab levelling and restoration.
- Tile and adhesive removal.



Hand Sawing

Hand sawing is perfect for cutting brick walls, precast concrete wall panels, and getting into tight spaces where large saws can't go. We use three types of hand saws:

Standard hand saw: This tool is made up of a 16" - 416mm diamond cutting disk driven by a Husquvana or Stihl chainsaw power head. The best in small demolition tools. Petrol hydraulic or electrically powered. These saws can cut up to 150mm in depth.

Ring saw: When you need a deeper cut, the Dragon Ring Saw can cut up to 460mm depth.

Hydraulic chainsaw: If you still need to cut deeper, this is the only saw available. This tool can plunge 600mm, ideal for cutting curved cuts with no overcuts.



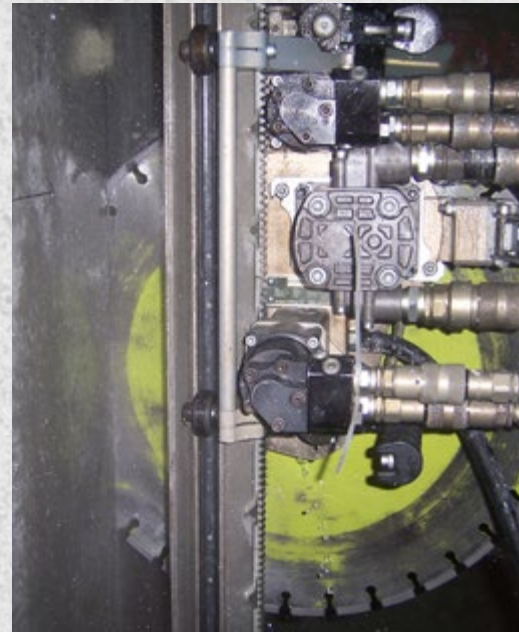


Wall Sawing

With this technique, the saw is operated remotely. The blade is attached to a cutting head that travels along a set of tracks. The tracks can be mounted vertically or horizontally, on an angle or even upside down, so yes it can cut ceiling, wall and floor panels.

We can cut from 10mm to 1000mm deep and it is another fantastic construction and demolition tool.

- Track mounted saw for cutting thick concrete
- Can be mounted horizontally, vertically or at any angle
- Smooth, precise finish to cuts



Floor Sawing

Floor sawing or flat sawing as it is known in the west, is the quickest and easiest way to cut large areas of floor in preparation for removal or demolition. By cutting large pieces of concrete into smaller pieces, it allows them to be transported and disposed of.

Concrete removal can be difficult, but our team are very experienced in this area and will help to bring your project in on time and on budget.

- Ideal for flat, horizontal surfaces such as floors, roads, bridges or jetties
- Cutting up to 1000mm depth to a chalk line
- Good for expansion joints
- Best suited for cutting standard floor slabs 80-200mm thick and suspended slabs up to 400mm thick.





Core Drilling

Core drilling is used when exact diameter openings are required. We can core holes from 16mm to 1200mm in diameter. Great for plumbing, electrical and mechanical applications.

Stitch drilling, which is an extension of core drilling, can be used to remove concrete of any depth and any diameter. This is particularly useful when other methods of removal are impractical.

- Holes can be drilled to any depth.
- Can be carried out mechanically or hand held
- Stitch drilling also available for non-standard concrete thickness



Ground Penetrating Radar

Hidden objects inside concrete structures, if cut, can be very expensive and time consuming to repair. It can also damage machinery and put operators at risk of injury.

At Undercut, we use ground penetrating radar (or GPR) to create live 2D and 3D models of concrete structures prior to making that first cut. We can accurately map both metallic and non metallic objects inside any concrete structure, and even determine slab thickness. This quick, safe and cost effective tool benefits us and our clients immensely. GPR is useful for detection and mapping of:

- Conduits and ducts
- Voids / slab thickness
- Rebar and reinforcing structures
- Post tension cables
- Electrical, data and communication cabling
- Drainage and plumbing
- Gas pipes
- Concrete deterioration





Wire Sawing

The wire saw is the extreme in diamond cutting technology being used in the concrete cutting industry.

A wire is diamond impregnated rope that runs through a series of pulleys to make a continuous loop around the concrete to be cut. The bigger the block, the longer the rope. Size is not an issue, and it even cuts through rock.

Uses include demolition and modifying of dams, bridges and mining structures.

Together with Decotek, Undercut assisted in the modification of Collie Dam, using wire sawing. (see below)



Contact Undercut

Undercut Australia PTY LTD

Website: www.undercutconcretecutting.com.au

www.concretecuttingwa.com.au

Email: info@undercutwa.com.au

Head Office

Address & Postal Address: 3/ 25 Dellamarta rd Wangara 6065

Phone: 08 9309 1981

Mobile: 0407 089 722 / 0447 430 818

Karratha Office:

Postal address: PO Box 1749 Karratha, WA 6714

Mobile: 0407 089 722

